

# Applying for access to ISIS

Emma Gozzard

User Programme Manager & User Office Group Leader

UKRI-STFC ISIS Neutron and Muon Source



# User Programme



**5** Muon instruments



**30** Neutron instruments

> **Direct**

>>> **Rapid**

🕒 **Xpress**

🤝 **Partnerships**

👉 **Industrial/Commercial**



ISIS Neutron and Muon Source

[www.isis.stfc.ac.uk](http://www.isis.stfc.ac.uk)

[@isisneutronmuon](https://twitter.com/isisneutronmuon)

[uk.linkedin.com/showcase/isis-neutron-and-muon-source](https://uk.linkedin.com/showcase/isis-neutron-and-muon-source)



# Applying for beamtime

- ISIS Facility user account

<https://users.facilities.rl.ac.uk>



Existing Users

## Sign in here

Email or Fed ID:

Password: [i](#)

Sign In

[Need help signing in?](#)

[Forgot Password?](#)

Using a public or shared computer? Be sure to sign out when you've finished and close all windows to end your session.

No online account?

## Register

If this is your first time using this website please read our

[Terms and Conditions](#)

before you

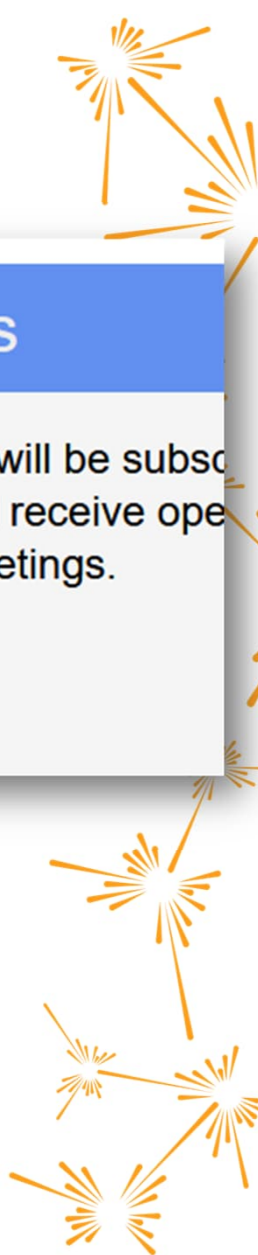
**Create a new facility user account with us**

### ▼ Mailing Lists

If you subscribe, you will be subscribed to emails, you will still receive open consultations and meetings.

**Subscribe**

**Unsubscribe**



ISIS Muon source [www.ukri.ac.uk/news/2018/08/20180814-isis-muon-source](http://www.ukri.ac.uk/news/2018/08/20180814-isis-muon-source)

# Applying for beamtime

- ISIS Facility user account
- Access call notifications and user communication



Science and  
Technology  
Facilities Council

STFC Facilities

Dear Colleague,

Applications are now invited for access to [Target Station 1 and 2 instruments](#), at the STFC ISIS Neutron and Muon Source Facility at the Rutherford Appleton Laboratory, UK.

Please note:

- HRPD and SURF are not available this call.
- There is limited availability on IMAT, OSIRIS and LET. As such, it is strongly recommended you contact an appropriate member of [scientific staff](#) before applying.

The deadline for applications is 17:00 BST (prompt) on Wednesday 16 April 2025

Access likely to be scheduled from September 2025

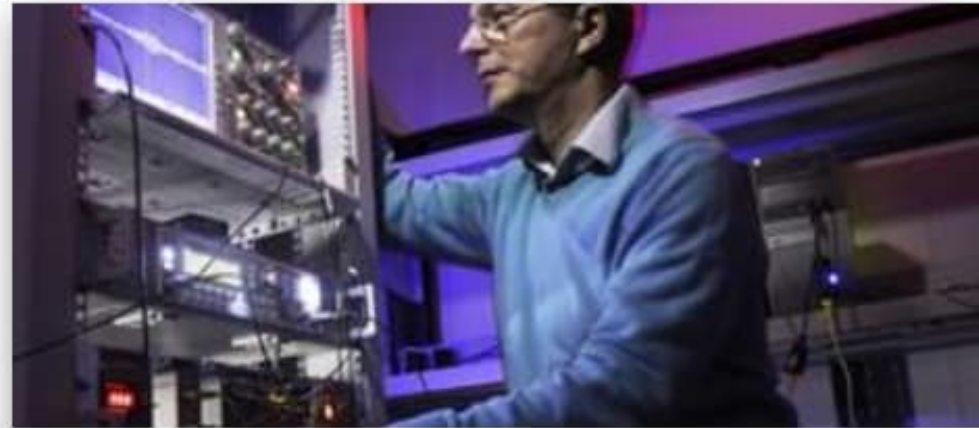
More information, including how to apply, can be found on the [call webpage](#).

Applicants are strongly recommended to contact an appropriate [Facility staff member](#) to discuss requirements before applying, even if you have previously submitted a proposal.



# Applying for beamtime

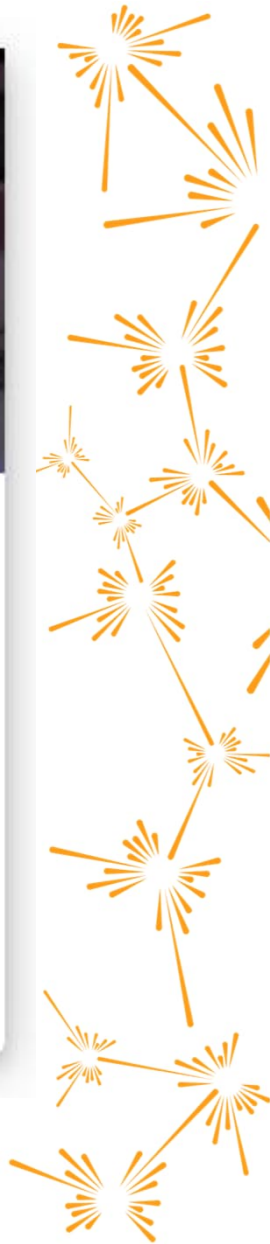
- ISIS Facility user account
- Access call notifications and user communication
- Engaging with the Facility prior to submission



## Instrument Scientists

This page lists the contact details for all instrument scientists and instrument cabins.

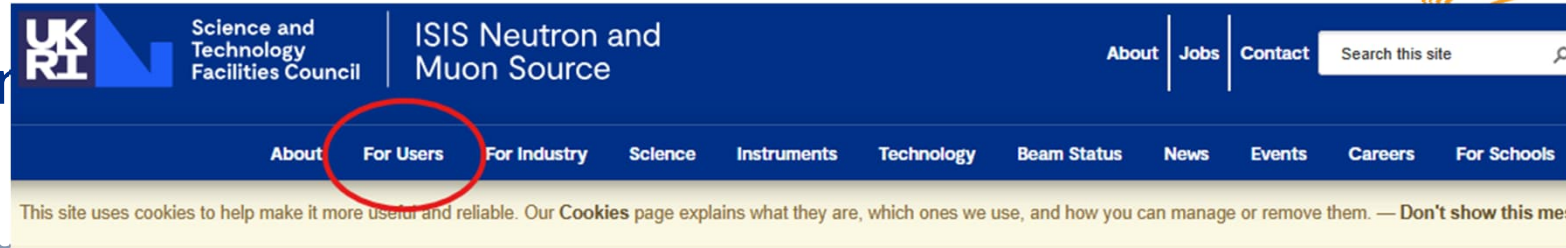
<https://www.isis.stfc.ac.uk/Pages/Instrument-Scientists.aspx>





# Applying for beamtime

- ISIS Facility user accounts
- Access call notification and user communication
- Engaging with the Facility prior to submission
- Website information



## Calls for access to ISIS Neutron and Muon Source

Facility access proposal call and deadline details

### Round 25-2 Details

Call for access is open

#### Applications for TS1 and TS2 instruments are invited

Please note:

- HRPD and SURF are not available this call.
- There is limited availability on IMAT, OSIRIS and LET. As such, it is strongly recommended you contact an appropriate member of [scientific staff](#) before applying.

**Call deadline is 17:00 BST Wednesday 16 April 2025**

Access likely to be scheduled from September 2025

Access panel meetings will take place 4-5 June 2025 with results to PIs expected by early July 2025

<https://www.isis.stfc.ac.uk/Pages/Apply-for-beamtime.aspx>

Guidelines for writing a good proposal science case can be found [here](#). Proposal review panel members strongly encourage the use of the template and adherence to the formatting instructions.

**To submit a proposal visit the [ISIS Online Proposal System](#)**

Please speak to a relevant [instrument scientist](#) before submitting your proposal.

#### In This Section

- [Beamtime proposal guidance](#)
- [Experimental Reports](#)
- [Consumables](#)
- [Beamtime access routes](#)
- [ISIS Isotope Facility](#)
- [Data Policy](#)
- [Publications and Open Access](#)
- [Requiring access to ISIS and Diamond Light Source](#)
- [Experimental Support and Sample Environment](#)
- [Science Case Template for ISIS Beamtime Proposal](#)
- [Terms and Conditions for Access](#)
- [Using the "New" Proposal System](#)
- [Privacy Policy](#)
- [Use of AI for ISIS Facility access proposals](#)
- [User Charter](#)

#### Related Sections

- [▶ Beamtime access routes](#)

#### Related Content

# Applying for beamtime

- ISIS Facility use
- Access call not and user comm
- Engaging with t prior to submis
- Website inform
- Direct Access

## Proposal Access Routes

All facilities ISIS CLF

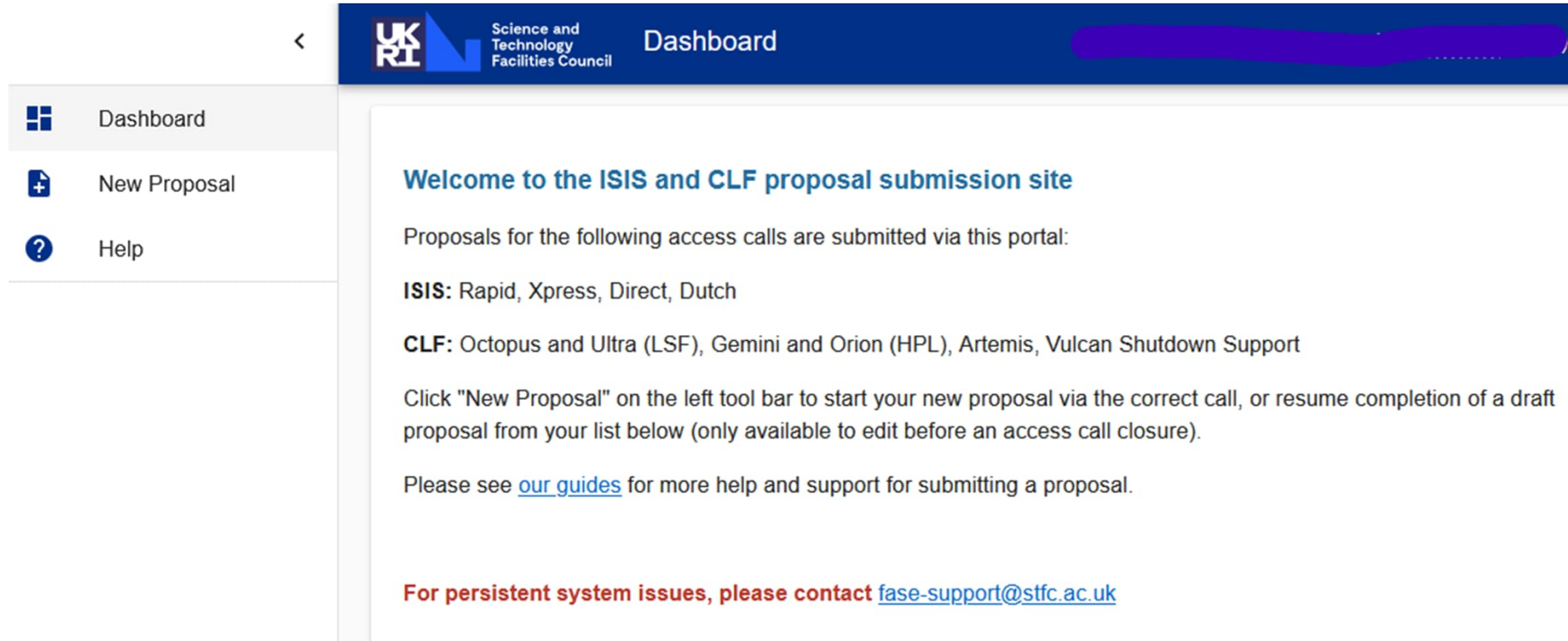
ISIS Info: ISIS expects an experiment team to come to ISIS to run experiments. All proposals must be discussed with an instrument scientist prior to submission.

All times shown on this page are in local UK time.

<b>ISIS Industry Collaboration Research and Development</b> Please speak with Chris Frost (chris.frost@stfc.ac.uk) for ISIS ICRD access Closed	<b>ISIS Consumables</b> If your experiment is not listed, please email fase-support@stfc.ac.uk. Please read consumable T&Cs here: www.isis.stfc.ac.uk/Pages/Consumables.aspx Apply	<b>ISIS Direct Access</b> Applications are now invited. Deadline for submissions is 17:00 BST Wednesday 16 April 2025. Please discuss all applications with your local contact before submitting a proposal Apply	<b>Xpress</b> Applications are invited. Please discuss all applications with your local contact before submitting. Apply
<b>Dutch Access</b> Currently closed Closed	<b>Rapid Access</b> Applications are invited for urgent access to TS1 and TS2 instruments. Please discuss all applications with your local contact before submitting a proposal Apply		

<https://proposal.isis.rl.ac.uk/proposal-launchpad/>

# Applying for beamtime



The screenshot shows a web dashboard for the Science and Technology Facilities Council. The top navigation bar is dark blue with the UKRI logo, the text 'Science and Technology Facilities Council', and the word 'Dashboard'. A purple search bar is on the right. A left-hand menu contains three items: 'Dashboard' (with a grid icon), 'New Proposal' (with a plus icon), and 'Help' (with a question mark icon). The main content area has a white background and contains the following text:

**Welcome to the ISIS and CLF proposal submission site**

Proposals for the following access calls are submitted via this portal:

**ISIS:** Rapid, Xpress, Direct, Dutch

**CLF:** Octopus and Ultra (LSF), Gemini and Orion (HPL), Artemis, Vulcan Shutdown Support

Click "New Proposal" on the left tool bar to start your new proposal via the correct call, or resume completion of a draft proposal from your list below (only available to edit before an access call closure).

Please see [our guides](#) for more help and support for submitting a proposal.

**For persistent system issues, please contact [fase-support@stfc.ac.uk](mailto:fase-support@stfc.ac.uk)**

## ■ Proposal submission system





# Submitting a proposal

- Dashboard

UKRI Science and Technology Facilities Council Dashboard

- Dashboard
- New Proposal**
- Help

**Welcome to the ISIS and CLF proposal submission site**

Proposals for the following access calls are submitted via this portal:

**ISIS:** Rapid, Xpress, Direct, Dutch

**CLF:** Octopus and Ultra (LSF), Gemini and Orion (HPL), Artemis, Vulcan Shutdown Support

Click "New Proposal" on the left tool bar to start your new proposal via the correct call, or resume completion of a draft proposal from your list below (only available to edit before an access call closure).

Please see [our guides](#) for more help and support for submitting a proposal.

**For persistent system issues, please contact [fase-support@stfc.ac.uk](mailto:fase-support@stfc.ac.uk)**

<https://proposal.isis.rl.ac.uk/proposal-launchpad/>

My proposals

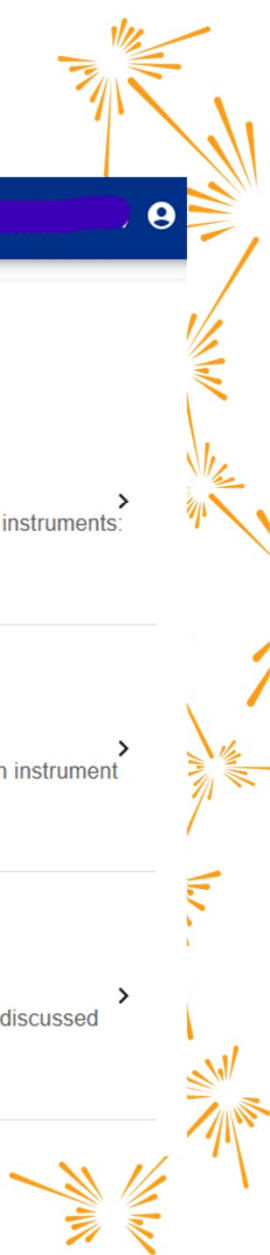
Actions	Proposal ID	Title	Status	Call	Created
	* 264704	Test	draft	ISIS Direct 2025_2	Yesterday
	* 996213	Test	draft	ISIS Xpress 2025_9	Yesterday



# Submitting a proposal

- Dashboard
- Call selection

The screenshot shows the 'Select Proposal Type' page on the Science and Technology Facilities Council website. The page has a dark blue header with the UKRI logo and the text 'Science and Technology Facilities Council'. Below the header is a navigation menu with three items: 'Dashboard', 'New Proposal', and 'Help'. The main content area is titled 'Select a call' and lists three proposal types. The first one, 'ISIS Direct Access call (25-2) (ISIS Direct 2025\_2)', is circled in red. It includes the following details: 'Application deadline: 16-04-2025 17:00', 'Internal deadline: 23-04-2025 13:00', and a note that the deadline for submissions is 17:00 BST Wednesday 16 April 2025. It also states that this call is for both TS1 and TS2 instruments, and that HRPD and SURF are not available for this call. The other two proposal types are 'ISIS Rapid Access (ISIS Rapid 2025\_0)' and 'ISIS Xpress Access (ISIS Xpress 2025\_9)', both with application and internal deadlines of 31-12-2025 23:55. The page also features a search bar and a user profile icon in the top right corner.



# Submitting a proposal

- Dashboard
- Call selection
- Questionnaire

UKRI Science and Technology Facilities Council Create Proposal

1 New proposal — 2 Research Support — 3 Publications — 4 Experiment — 5 Samples — 6 Hazards — 7 Other Facilities — 8 Science Case Upload — 9 Final — 10 Review

**THIS CALL IS FOR ISIS TS1 AND TS2 INSTRUMENTS**

We acknowledge that submission system performance issues were experienced during the last call for access. Issues have been identified and resolved to ensure a smoother and more reliable submission experience during this call for access.

For system issues, please contact: [fase-support@stfc.ac.uk](mailto:fase-support@stfc.ac.uk)

**Please note:**

- HRPD and SURF are not available this call
- IMAT, OSIRIS and LET have limited availability

**You are strongly encouraged to speak to the relevant [instrument scientist](#) before submitting a proposal**

Please ensure you have read the information on the [call webpage](#) and the [proposal writing guidelines](#) before submitting your proposal.

We expect an experimental team to physically come to the Facility to run the experiment. Please ensure you can fulfil this requirement before submitting a proposal.

Proposals submitted prior to 2023 cannot be cloned to this system.

Students are permitted to be PI, but the academic supervisor **must** be added as a Co-Investigator to any submitted proposal.

**This system will automatically log out after 30 minutes of inactivity, and any unsaved changes will be lost.**

www.isis.stfc.ac.uk  
@isisneutronmuon  
uk.linkedin.com/showcase/isis-neutron-and-muon-source

# Submitting a proposal

- 1 New proposal
- 2 Research Support
- 3 Publications
- 4 Experiment
- 5 Samples
- 6 Hazards
- 7 Other Facilities
- 8 Science Case Upload
- 9 Final
- 10 Review

- Questionnaire
  - Topics

Proposal abstracts must be 250 words or less.

Title \*

Abstract \*

Principal Investigator \*

Emma Gozzard; Science and Technology Facilities Council

Co-Proposers

Actions	Firstname	Lastname	Preferred name	Institution
---------	-----------	----------	----------------	-------------

No Users

+ ADD

To add another investigator to your proposal, the investigator must have created an account with us and have their preferences set to searchable. Please encourage your colleague to [create an account](#) and set their [preferences to searchable](#) if you're unable to add them to your proposal.

Is the PI a student? \*

Yes  No



ISIS Neutron and Muon Source

[www.isis.stfc](http://www.isis.stfc)

[@isisneu](https://twitter.com/isisneu)

[uk.linkedin.com](https://uk.linkedin.com)





# Submitting a proposal

## Questionnaire topics

- **Research Support:** Industry links, PhD students, ISPF funding request
- **Publications:** Your own, recent ISIS experiments, relevant to science case
- **Experiment:** Instrument and time request, sample environment
- **Samples:** Add sample information
- **Hazards:** Basic hazard information
- **Other facilities:** Deuterated materials, Diamond Light Source and RCaH
- **Science case:** 2 pages, Background and Context, Proposed Experiment, Summary of previous beamtime or characterisation, Justification of beamtime request
- **T&Cs, Review and Submission** (proposal can be edited until call closure)



## Post submission

Approx. 6-8 weeks

Call closes

Technical feasibility

Scientific review

Review Access Panels

Decision notification to PIs & Co-Is